

OPRAH'S DIET DISCOVERY

Ends carbo cravings forever!



NATIONAL

\$1.59 / \$1.99 CANADA

Examiner

November 2, 1995

AMERICA'S FAVORITE FAMILY WEEKLY



SUREFIRE

LOTTO

SYSTEMS

STARS KISS & TELL



Who's really
in love...
& who's not

**UNSOLVED
MYSTERY:
ENTIRE TOWN
DISAPPEARS!**

**NEW
INVESTIGATION
BOMBHELL!**

JONBENET COPS WIRETAP TRAP FOR MOM



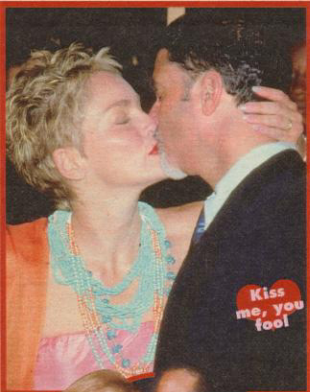
\$1.59 / \$1.99 Canada

44



0 899556 8

A KISS is just a KISS



Kiss me, you fool

Sexy **SHARON STONE** and newspaper editor hubby **PHIL BRONSTEIN** show more passion than most Tinseltown twosomes. "Her hand on the back of his neck says: Kiss me, you fool. Although both are into it, his stiff body shows he's not used to such public displays of affection."

KIM BASINGER freezes up to hubby **ALEC BALDWIN**'s loving peck. "His kiss on her cheek says: I feel tender toward you but not in a sexual way right now. His hand in his pocket may indicate they just had a fight and he's trying to make up as best he can."



Pure animal passion

JULIA ROBERTS is no Runaway Bride as she and hunky honey **BENJAMIN BRATT** lock lips at her movie's premiere. "There's pure animal passion here. These lovebirds are in their own little world and they don't care who's watching."

PAMELA ANDERSON LEE tickles the tongue of on-again-off-again mate **TOMMY LEE** in this tacky exhibition of bad taste. "They're both teasing in a you-turn-me-on way. He seems oblivious that his drink's about to tip over. Her exposed throat says: Take me, I'm yours."

Talk show queen **OPRAH WINFREY** looks lifeless as lover **STEDMAN GRAHAM** plants a wet one on her. "While he's making a sincere gesture of affection, her arm has dropped to her side, which could be a sign of rejection. Her wrinkled nose may mean: Not here, my heart's not in it."



Not here, honey



Cold as ice

The Force **NEESON** as star clutches **W** **RICHARDSON** brace. "He's really pulls her closer fingers so she c
Their body la
We're in love
ting out the rest



Mickey Blue **HUGH GRANT** galpal **ELIZ** **HURLEY** look friends than lo
ther is into it.
his cheek
mantic
looks li
ing: No
got of
on r



Take me, I'm yours



Bond ma
spying, e
KEELY SH
as if to sa
And si

BOD

is it?

Celebrity

LIP LOCKS

reveal who's really

IN LOVE



♥ **SOME** Hollywood stars may not play kiss and tell — so we're going to do that for them!

To the expert eye, these lip-locking snapshots speak volumes about who's really in love — and who's just puckering up for the camera. "Kissing shows an expression of affection,"

says Carolyn Bushong, a Denver-based psychotherapist and body language expert. "How you kiss or touch is an indication of your passion."

Check out what Bushong says these smooching star couples' body language really reveals.

— L.A. JUSTICE

With *Eyes Wide Shut*, **NICOLE KIDMAN** gives a flirty smile as main man **TOM CRUISE** kisses her curls. "She's the power player in this relationship. She appears to be saying: Go ahead, worship me. He complies by kissing her in an absolutely adoring way."

WHITNEY HOUSTON puts the squeeze on stray-happy hubby **BOBBY BROWN**. "This picture is symbolic of their whole relationship. She's holding on to him for dear life. However, his gaze says: I'm with her but I'm really not interested."

BARBRA STREISAND's heart sings for handsome hubby **JAMES**

BROLIN. "Her arms around his neck show

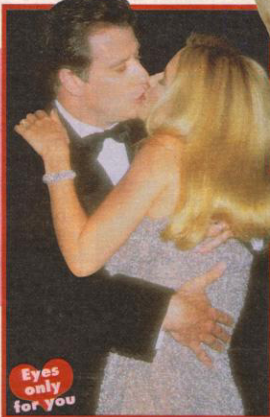
she's trying to pull him as close as possible. His arms around her waist show he returns the feeling. They're

totally absorbed, as if to say: We don't care if everyone sees how we feel about each other."



JOHN TRAVOLTA shows his true Primary Colors as he kisses pretty wife, actress **KELLY PRESTON**.

"Both are totally focused as though saying: We only have eyes for each other."



can't stop kiss galpal making away to the party. either."

age expert analyzes stars' **SMOOCHES**